

Phi-power AG is supplying high performance axial flux motors. The machines offer superior power and torque density with low torque-ripple. The Ph38x series is offered as single (PH381) and dual stage (P382) machines.

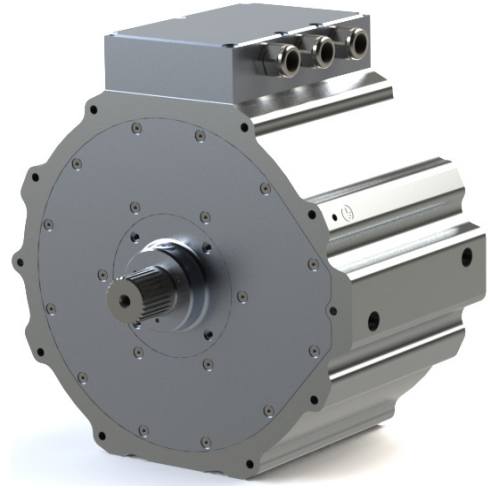
Overview

The PH382 is water cooled as standard and is best used with variable frequency drives running vector control.

The motor is equipped with a resolver for position feedback and PT100 temperature sensors.

The PH38x motors are compatible with EVO Electric machine. The PH38x machines have improved power and speed range as they use Phi technology.

Phi-Power also adapts its technology for specific applications and develops custom machines to suite specific needs.



PH.382 - Performance Parameters:

Peak Torque (for up to 60s)	1280	[Nm]
Nominal Torque	550	[Nm]
Peak Output Power (for up to 20s)	400	[kW]
Nominal Output Power	180	[kW]
Maximum Speed	6000	[rpm]
Peak Efficiency	>95.5	[%]
Mass¹	83	[kg]
Diameter²	380	[mm]
Length³	230	[mm]
Inertia	0.11	[kgm ²]

Key Features:

- Low weight
- High efficiency
- High Torque
- Simple liquid cooling with water- glycol (no oil required)
- Low inertia
- Compatible with standard inverters
- Integrated resolver feedback
- Stator temperature sensors
- Flexible winding configuration allows for different operating voltages.

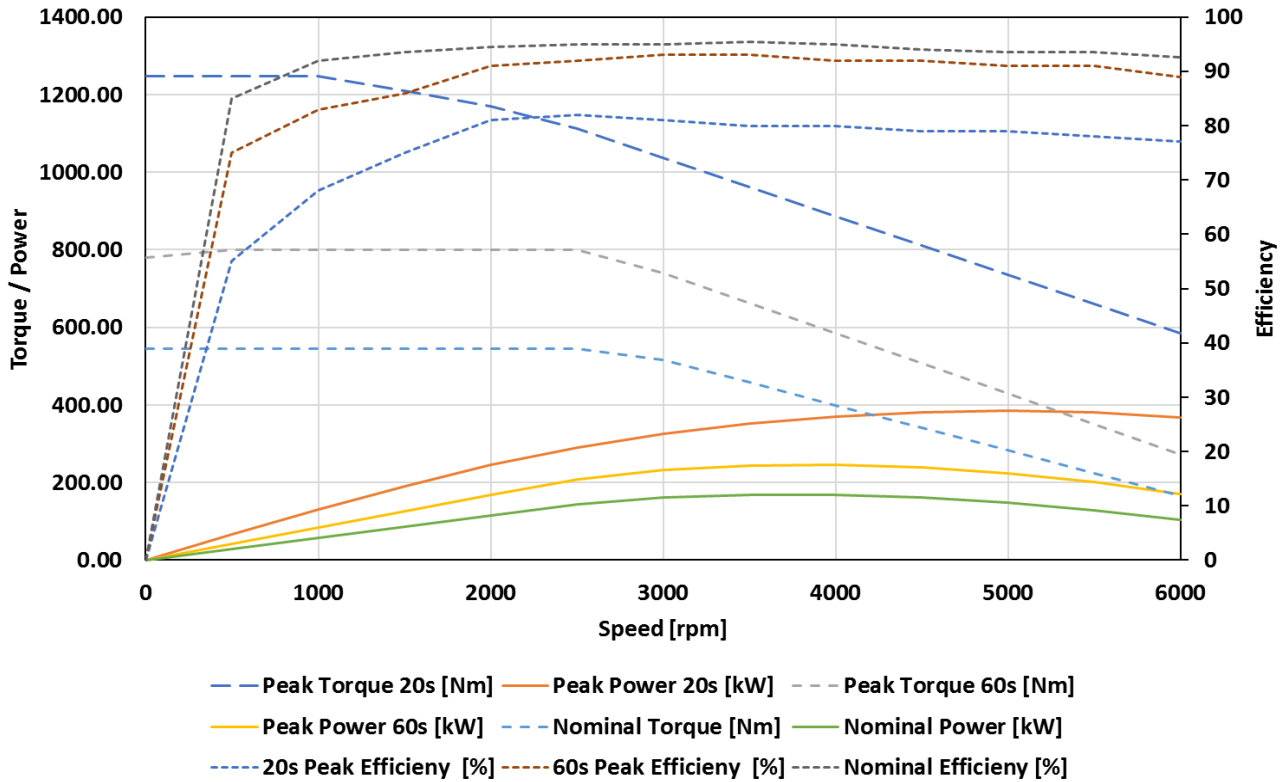
Typical performance values.

1) Dry complete with shaft 2) Body max diameter excluding terminal box and coolant manifold 3) Internal resolver version.

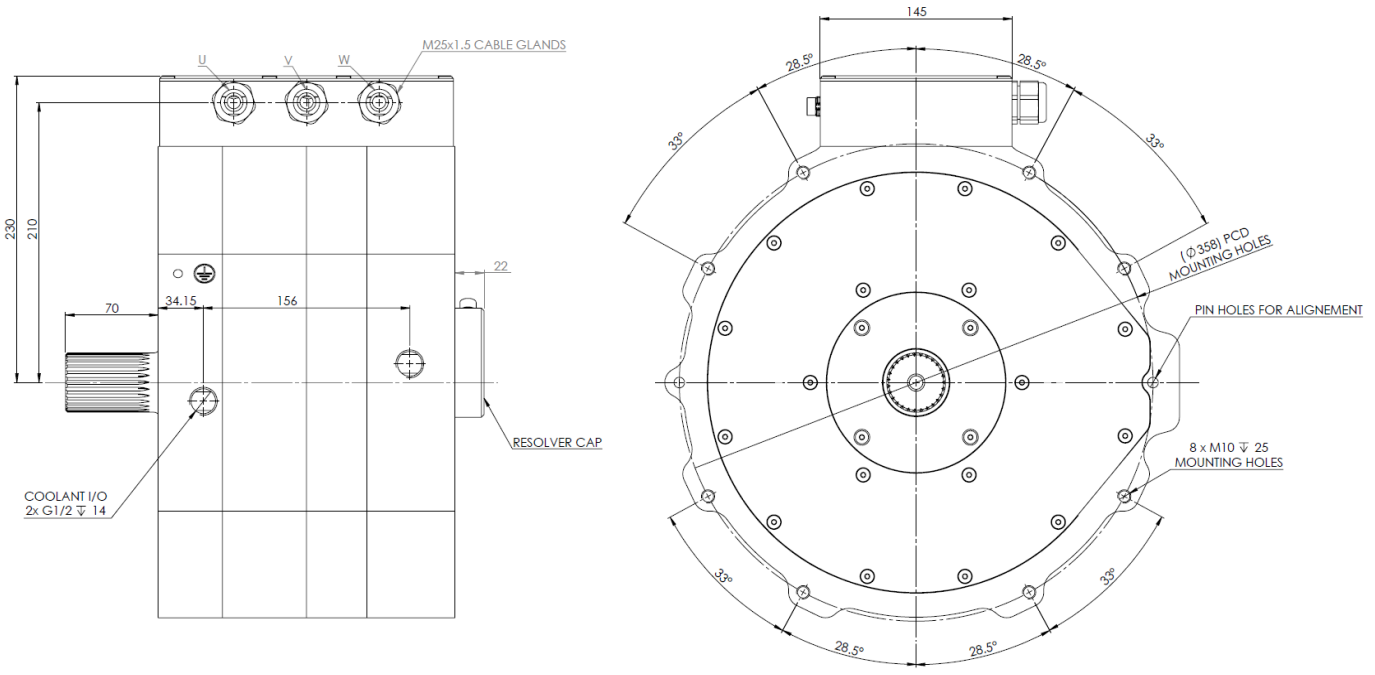
Please contact us to discuss your application requirements or other motor sizes you require. CAD models and detailed electrical parameters available on request.

Ratings and dimensions subject to change without notice, please consult factory. .

Typical Performance PH.382



PH.382 - Outline Drawing



Ratings and dimensions subject to change without notice, please consult factory. CAD models and detailed electrical parameters available on request.

© 2018 phi-power ag – version 1.3